

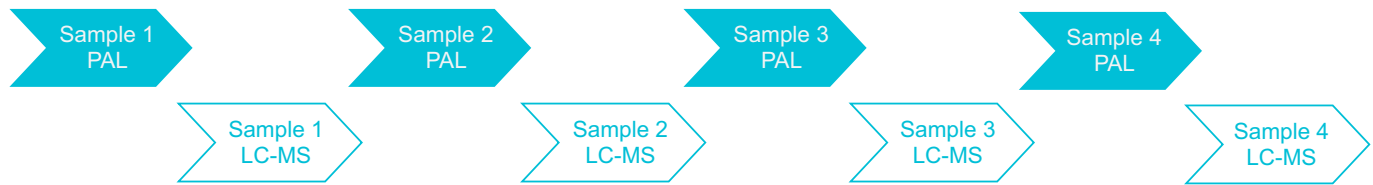
PAL3 AAO Driver for Sciex Analyst®  
Higher Throughput. Better Usability.



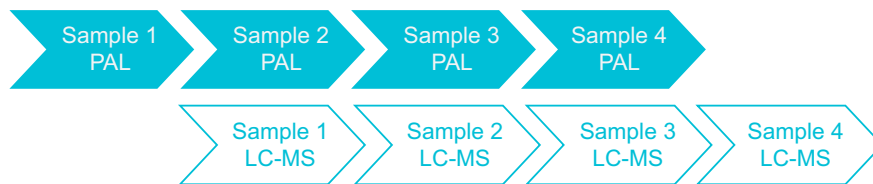
# PAL3 AAO Driver for Sciex Analyst®

## More samples in less time.

Analysis time without prep ahead:



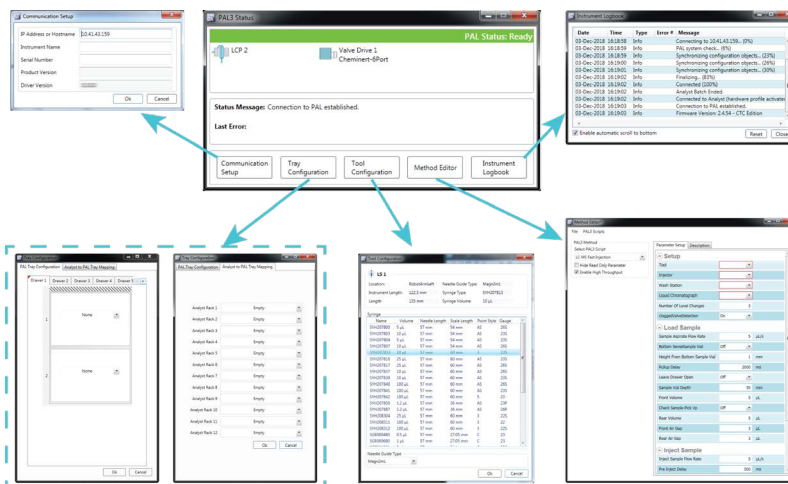
New PAL3 AAO: Analysis time with prep ahead:



Prep ahead function

No delays related to ADD/ICF limitations  
«Leave Drawer Open» option for faster cycle times

⇒ 50% higher throughput



Simpler plate mapping

Improved UI design, central entry point

Clear log file info

⇒ Improved usability

Product info:

Supported Analyst software versions : 1.5.2 HF1 and higher up to 1.6.3, 1.7 HF2

Supported PAL3 firmware versions : 2.4.x, 2.5.x, 3.0 and higher (Smart Syringe support)

P/N: PAL3-AAODrvAnalyst

© 2019 CTC Analytics AG. All rights reserved. Neither this publication nor any part hereof may be copied, photocopied, reproduced, translated, distributed or reduced to electronic medium or machine readable form without the prior written permission from CTC Analytics AG, except as permitted under copyright laws.

CTC Analytics AG acknowledges all trade names and trademarks used as the property of their respective owners.

PAL is a registered trademark of CTC Analytics AG | Switzerland

CTC Analytics AG, Industriestrasse 20, CH-4222 Zwingen, T +41 61 765 81 00, Contact: info@ctc.ch | Switzerland

For more information on the PAL RTC and RSI, including the latest application notes visit:

[www.palsystem.com](http://www.palsystem.com)

