

Valco Valve Identification

W-Type Valve



Cheminert Valve



W-Type Rotor



Cheminert Style rotor



How to identify your valve

VICI valves are all marked with a serial number that can be used to determine the product number of the valve. The pictures below show where the SN can be found on each valve style. Once the SN is obtained it can be provided to LPP for valve identification.



Cheminert Stator Material

The stator is held at a constant, pre-set force against the rotor. The stator together with the rotor form the slots which connect the ports for sample flow. Both the rotor and stator can wear over time and can easily be replaced by removing the 2-3 screws on the stator face and replacing the existing rotor or stator. The screws are then put back in and tightened. The valve is then ready for use at the pre-set factory pressure specification.*

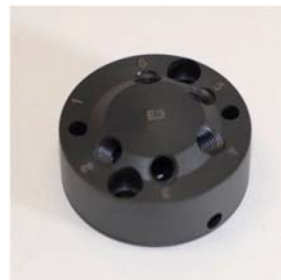
Nitronic 60



Coated Stainless



PAEK



*VICI AG International, Catalog 65, pg. 146